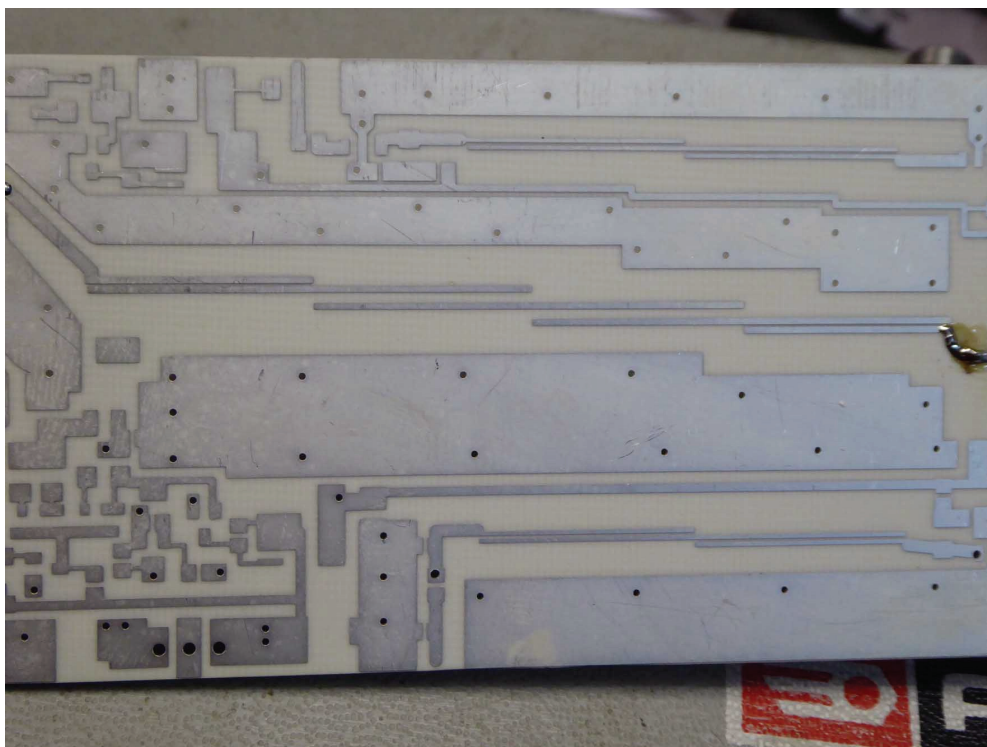
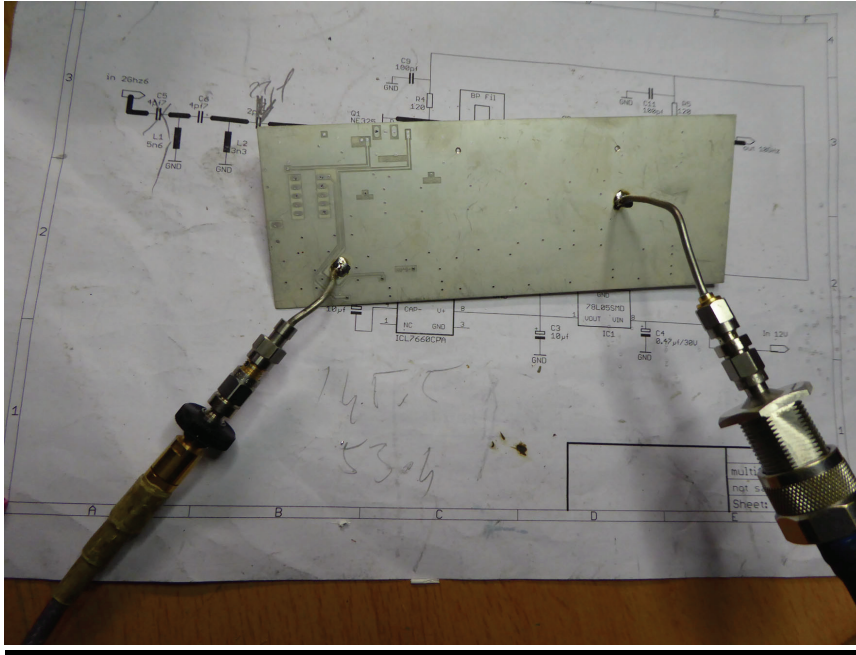


**Mesure filtre Sur P.C.B traitement Argent.**  
**Transverter 13cm multi-bandes.**

<b>QRG</b>	<b>Perte inserFiltre1 Mixer</b>	<b>Perte inter étage</b>
2.2GHz	-21dB	-2.8dB
<b>2.3GHz</b>	<b>-4dB</b>	<b>-1dB</b>
<b>2304</b>	<b>-3.8dB</b>	<b>-1dB</b>
<b>2320</b>	<b>-2.8dB</b>	<b>-0.9dB</b>
<b>2400</b>	<b>-2.5dB</b>	<b>-1.3dB</b>
<b>2420</b>	<b>-2.6dB</b>	<b>-2dB</b>
<b>2450</b>	<b>-3.5dB</b>	<b>-2dB</b>
2500	-10dB	-2.2dB
2.6GHz	-23dB	-3.4dB
2.7GHz	-32dB	-4.4dB
2.8GHz	-40dB	-5.6dB



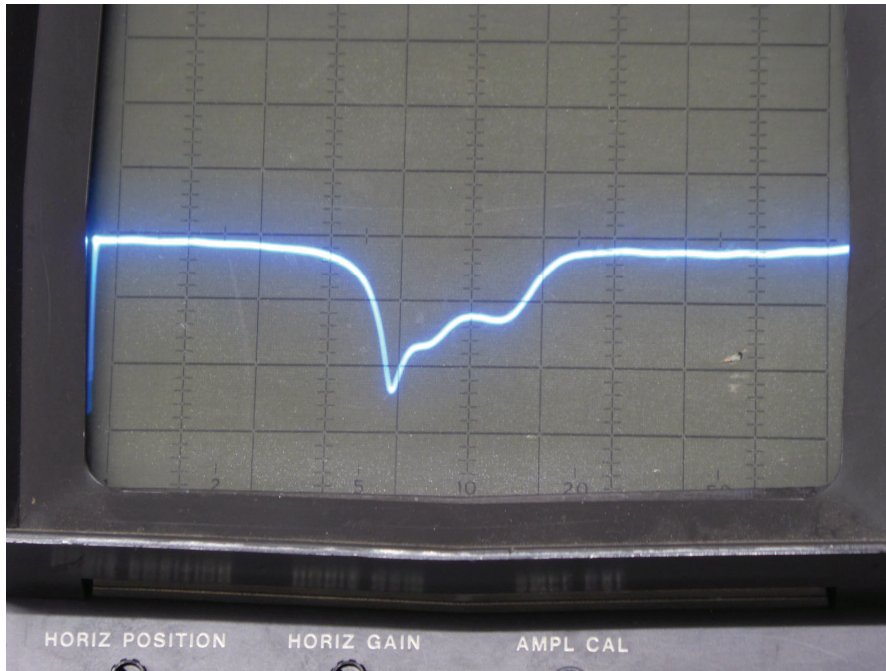
**Le filtre Mixer**



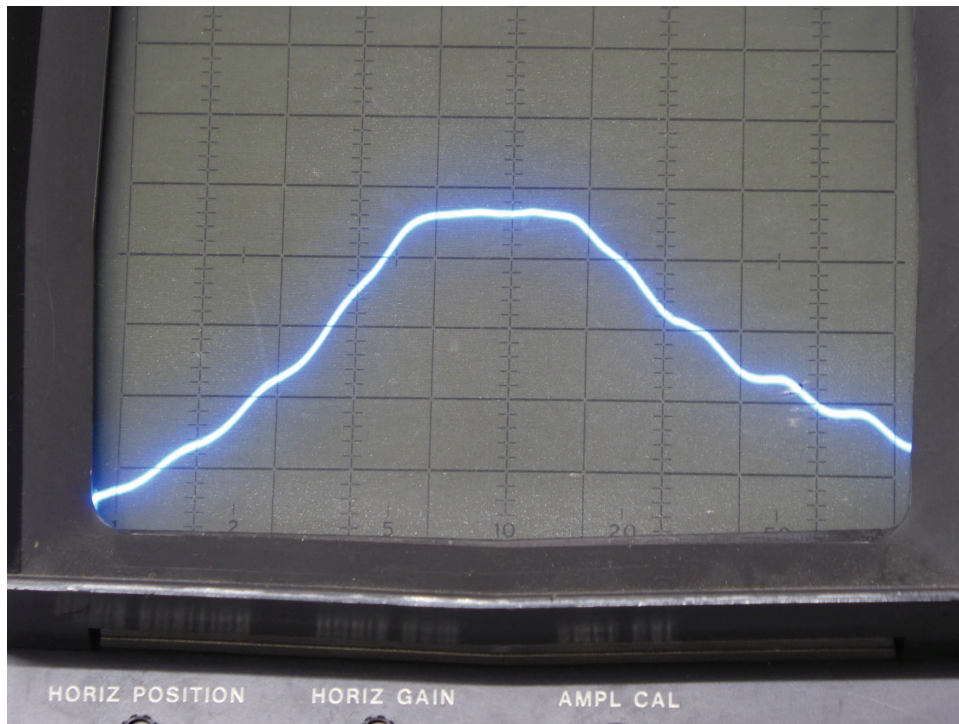
Conditions de mesures :

filtre encadré de deux atténuateurs de 10dB, réuni d'un côté au générateur, et la sortie sur l'analyseur de spectre.

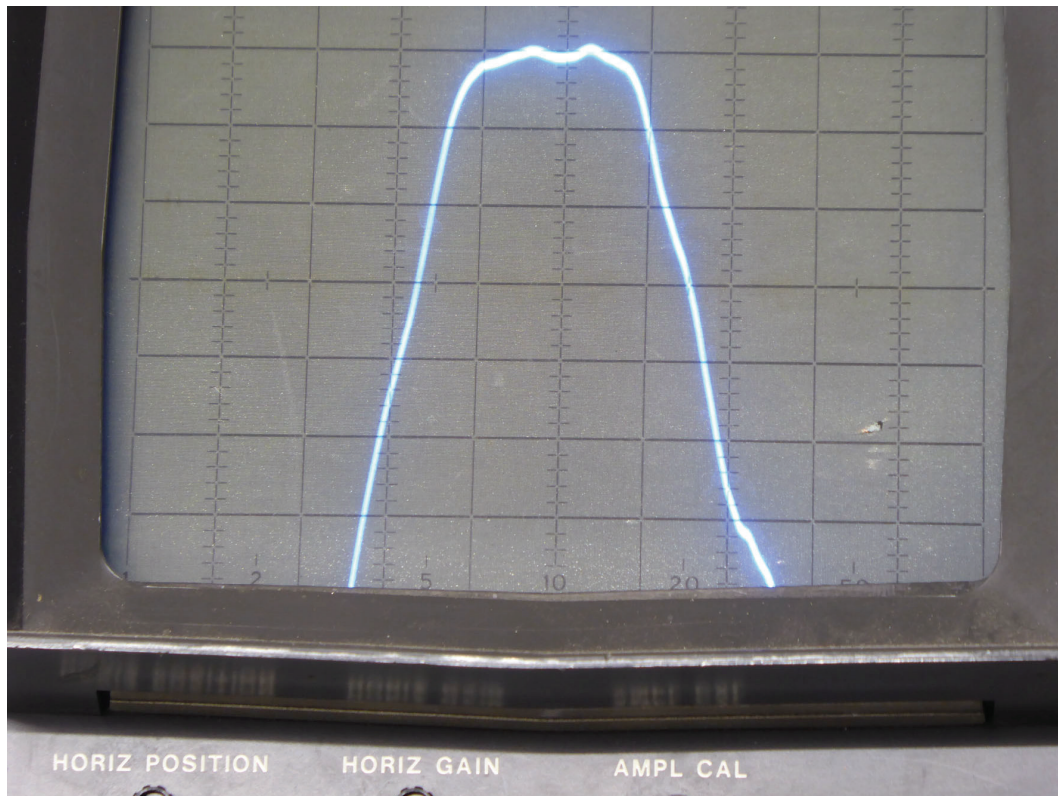




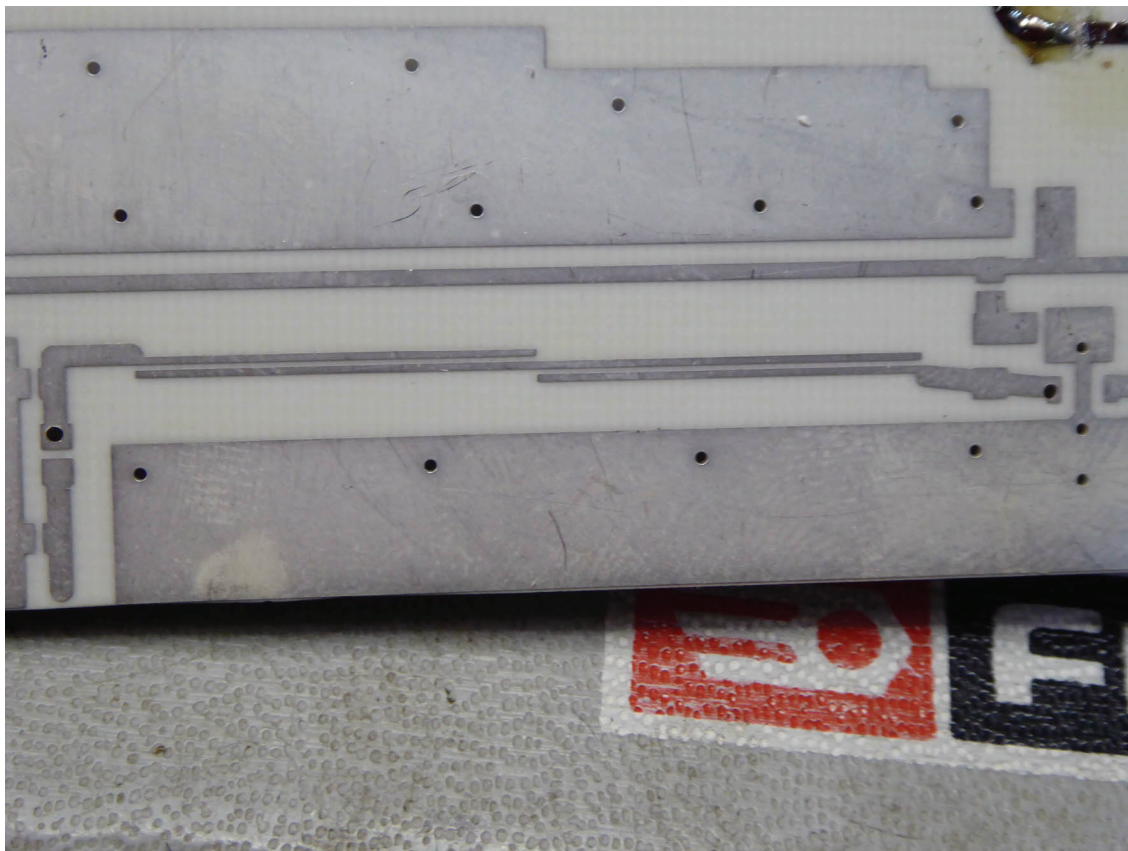
Adaptation , 10dB-C F 2à 2.8GHz



Gabarit, 10dBC...2/2.8Ghz



Le même 2.5dB carreaux.



Le filtre inter-étage