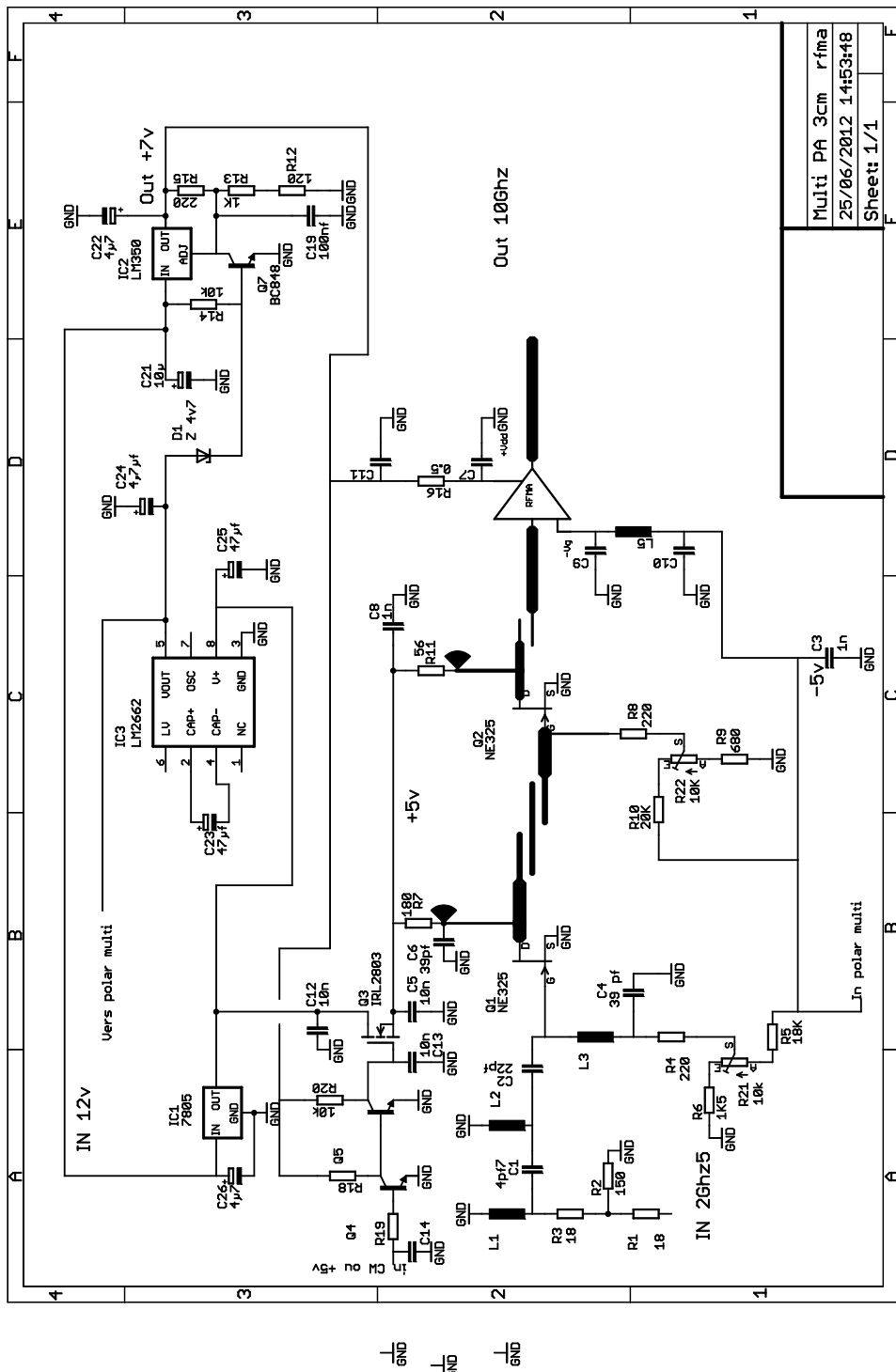
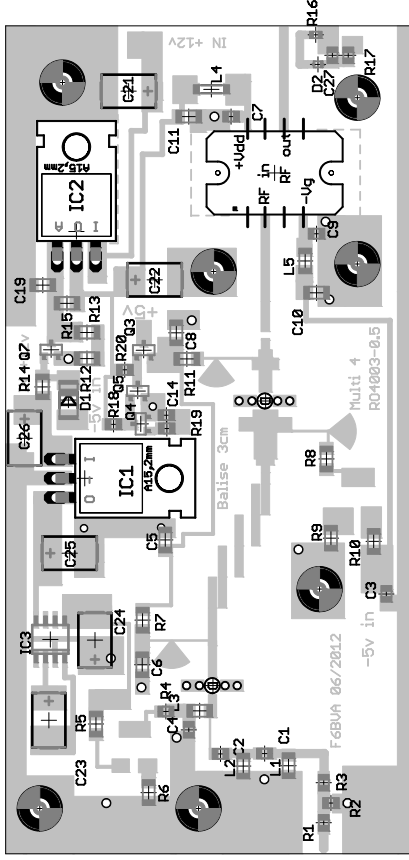
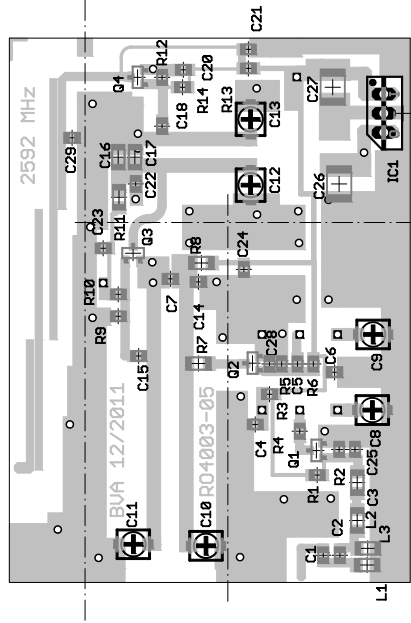


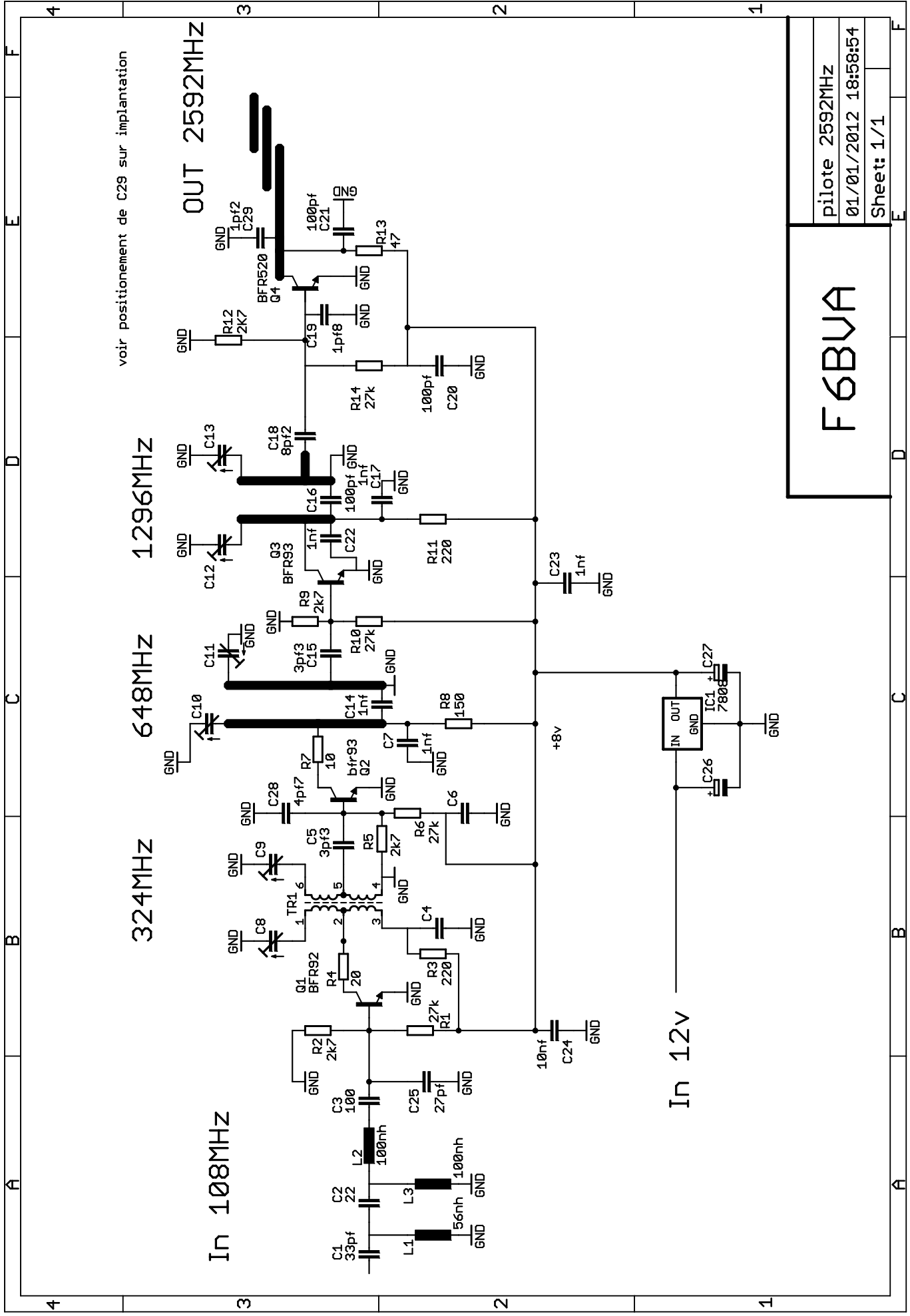
F6BVA 4W 10GHz		mono 10GHz
		11/11/2012 14:23:36
Sheet: 1/1		



Multi PA 3cm rma
25/06/2012 14:53:48
Sheet: 1/1







voir positionnement de C29 sur implantation

F6BVA	
pilote 2592MHz	
01/01/2012 18:58:54	
Sheet: 1/1	

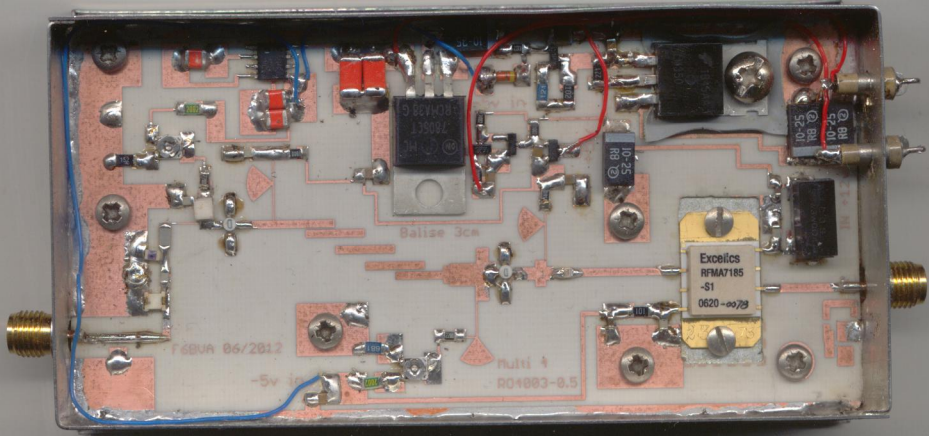
2592 MHz

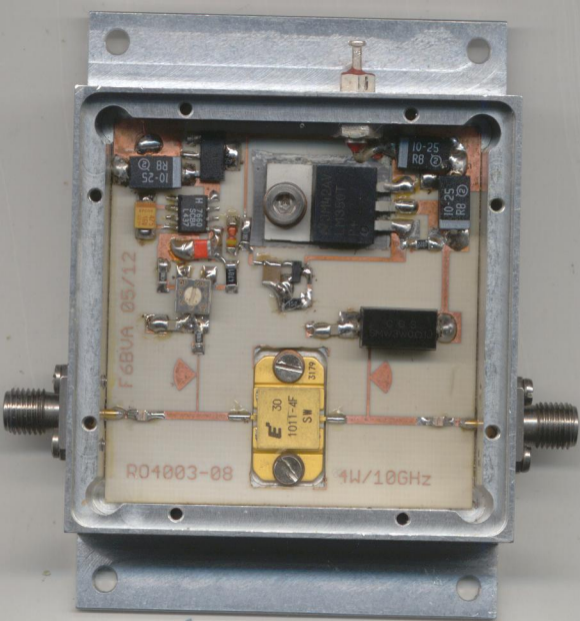
BUA 01/2011

R04003-05

10-25
R8

10-25
R8





F6BUA 05/12

R04003-08

4W/10GHZ

E 30
101T-4F
SW
3179

K331022AV
L1333VT

10-25
RB

10-25
RB

10-25
RB

Mon 26 Nov 2012 12:19

REF 38.5 dBm

A_Write B_Blank MKR 10.41 GHz

10 dB/

36.16 dBm

LOF

SPAN
10.00 GHz

P-N

CENTER 10.37 GHz

RBW 5 MHz

VBW 5 MHz

SMP 150 ms

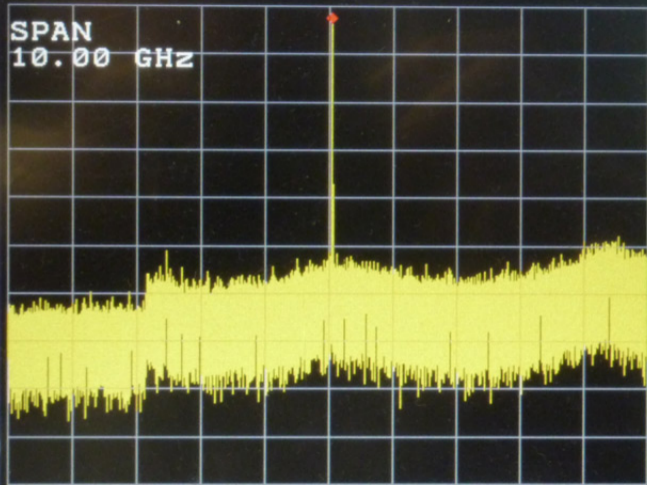
SPAN 10.00 GHz

ATT 20 dB

Span

Full Span

Zero Span



Mon 26 Nov 2012 12:20

REF 39.6 dBm

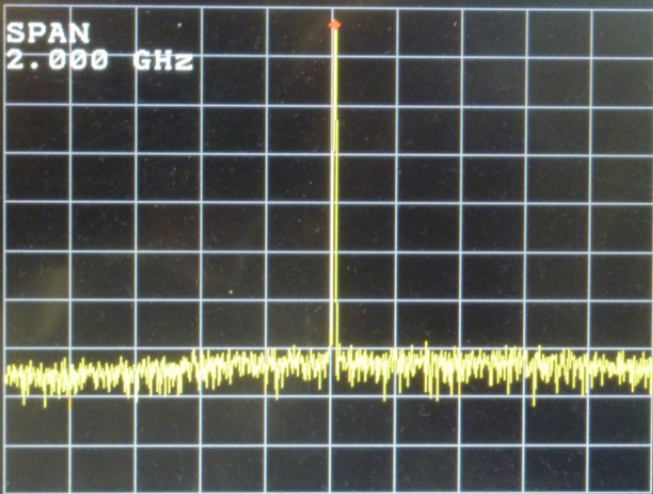
A_Write B_Blank MKR 10.377 GHz

10 dB/

36.20 dBm

LOF

SPAN
2.000 GHz



MEG

CENTER 10.370 GHz

RBW 5 MHz

VBW 5 MHz

SMP 50 ms

SPAN 2.000 GHz

ATT 20 dB

Span

Full Span

Zero Span



Mon 26 Nov 2012 12:21

REF 39.6 dBm

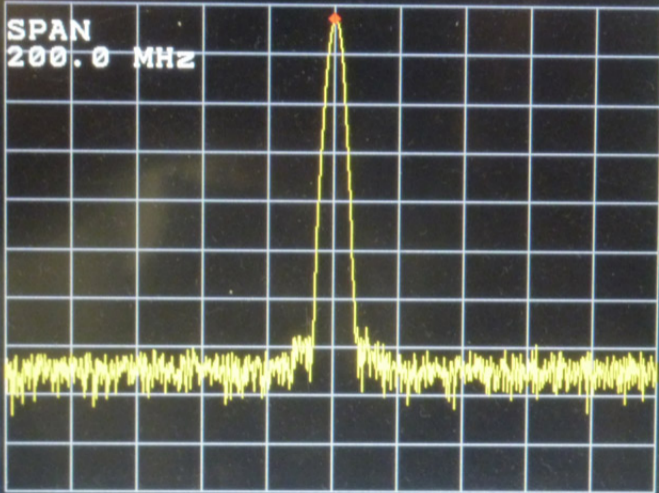
A_Write B_Blank MKR 10.3693 GHz

36.83 dBm

10 dB/

LOF

SPAN
200.0 MHz



NEG

CENTER 10.3693 GHz

RBW 3 MHz

VBW 3 MHz

SMP 50 ns

SPAN 200.0 MHz

ATT 20 dB

Sweep

Sweep
Mode

Tr igger
Source

Tr igger
Level



Mon 26 Nov 2012 12:22

REF 39.6 dBm

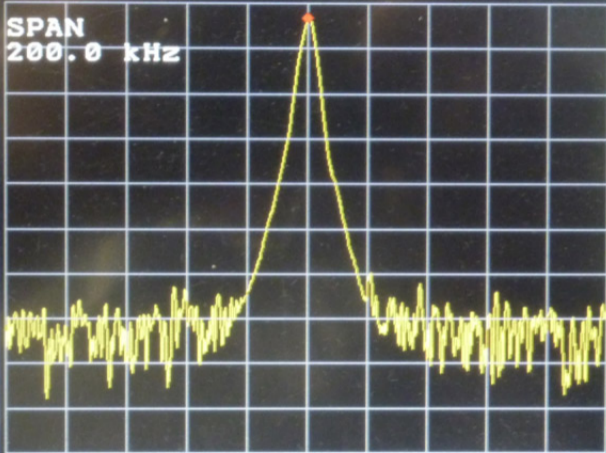
A_Write B_Blank MKR 10.3685562 GHz

10 dB/

36.32 dBm

LOF

SPAN
200.0 kHz



NEG

CENTER 10.3685562 GHz

SPAN 200.0 kHz

RBW 3 kHz

VBW 3 kHz

SMP 50 ns

ATT 20 dB

Span

Full Span

Zero Span